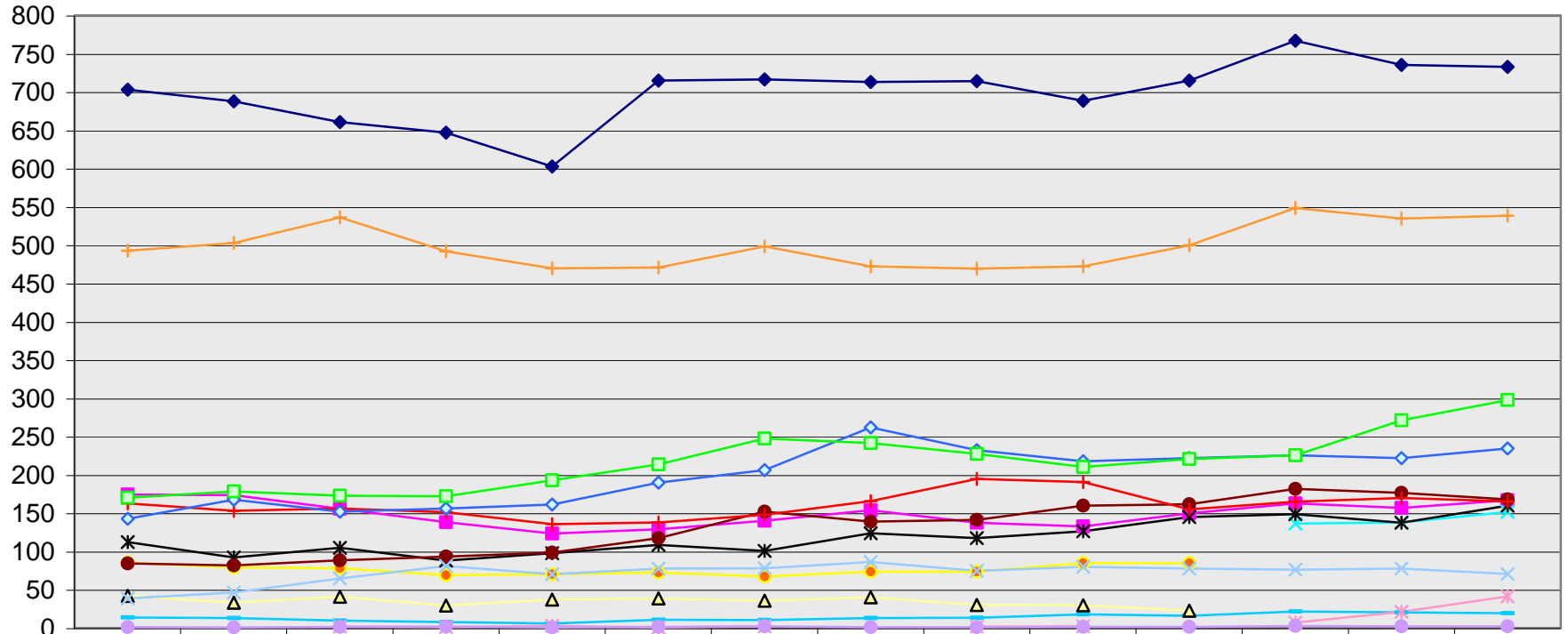


Annualized Undergraduate Equivalent Enrolments Taught (EET) - Humanities

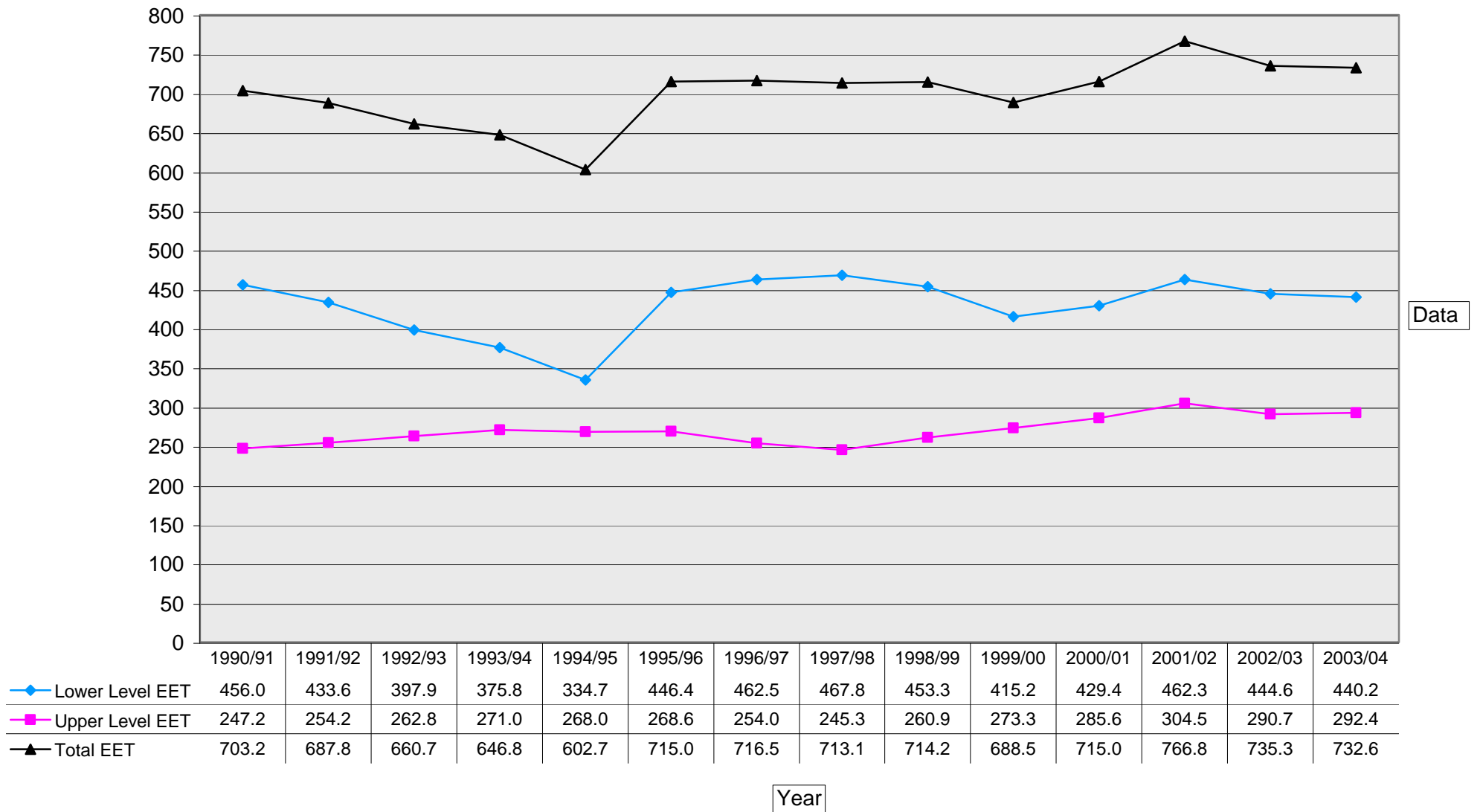


English	703.2	687.8	660.7	646.8	602.7	715.0	716.5	713.1	714.2	688.5	715.0	766.8	735.3	732.6
French	174.1	173.7	155.6	138.2	123.5	128.8	140.2	153.7	137.3	132.7	149.6	162.9	156.9	166.7
Germanic Std	85.4	79.3	78.2	69.1	70.3	72.5	67.3	73.5	73.6	84.7	84.7			
Germanic & Russian Studies												136.5	138.0	151.6
Greek & Rom. Std	112.1	92.2	104.9	88.1	97.6	108.6	100.8	123.9	117.5	126.4	145.0	148.7	137.5	159.7
Hisp. & Ital. Std	84.2	81.7	88.4	93.4	98.5	117.3	151.9	138.8	141.2	159.9	161.6	181.5	176.4	168.1
History	492.8	502.8	536.1	492.0	469.6	470.9	498.1	472.4	469.3	472.4	499.7	548.5	534.6	538.3
Linguistics	162.8	153.0	156.2	151.2	135.6	137.8	147.8	165.6	194.6	190.6	155.1	165.0	169.9	165.4
Medieval Studies	13.6	12.9	9.7	7.7	5.8	10.9	10.4	13.1	13.5	17.9	15.8	21.6	20.5	19.5
Pac. & Asian Std	142.7	167.8	151.8	156.0	161.4	189.9	206.1	261.8	232.3	217.9	222.0	225.6	222.0	234.3
Philosophy	170.1	178.3	172.8	172.0	192.8	213.7	247.6	241.4	227.4	210.4	220.6	225.5	271.1	297.8
Slav. Std	42.1	33.2	40.7	29.3	37.1	38.5	35.7	40.0	30.2	29.8	22.6			
Women's Studies	38.5	46.5	64.8	81.1	70.2	77.7	78.0	86.2	74.6	80.0	77.7	76.1	77.5	70.5
Interdisciplinary			1.7	1.3	3.0	0.8	2.3		2.0	2.4		7.1	21.0	41.3
Taught at Fac. Level	1.1	0.9	1.4	1.7	0.9	1.4	2.1	1.2	1.2	1.4	1.6	2.6	2.1	2.3

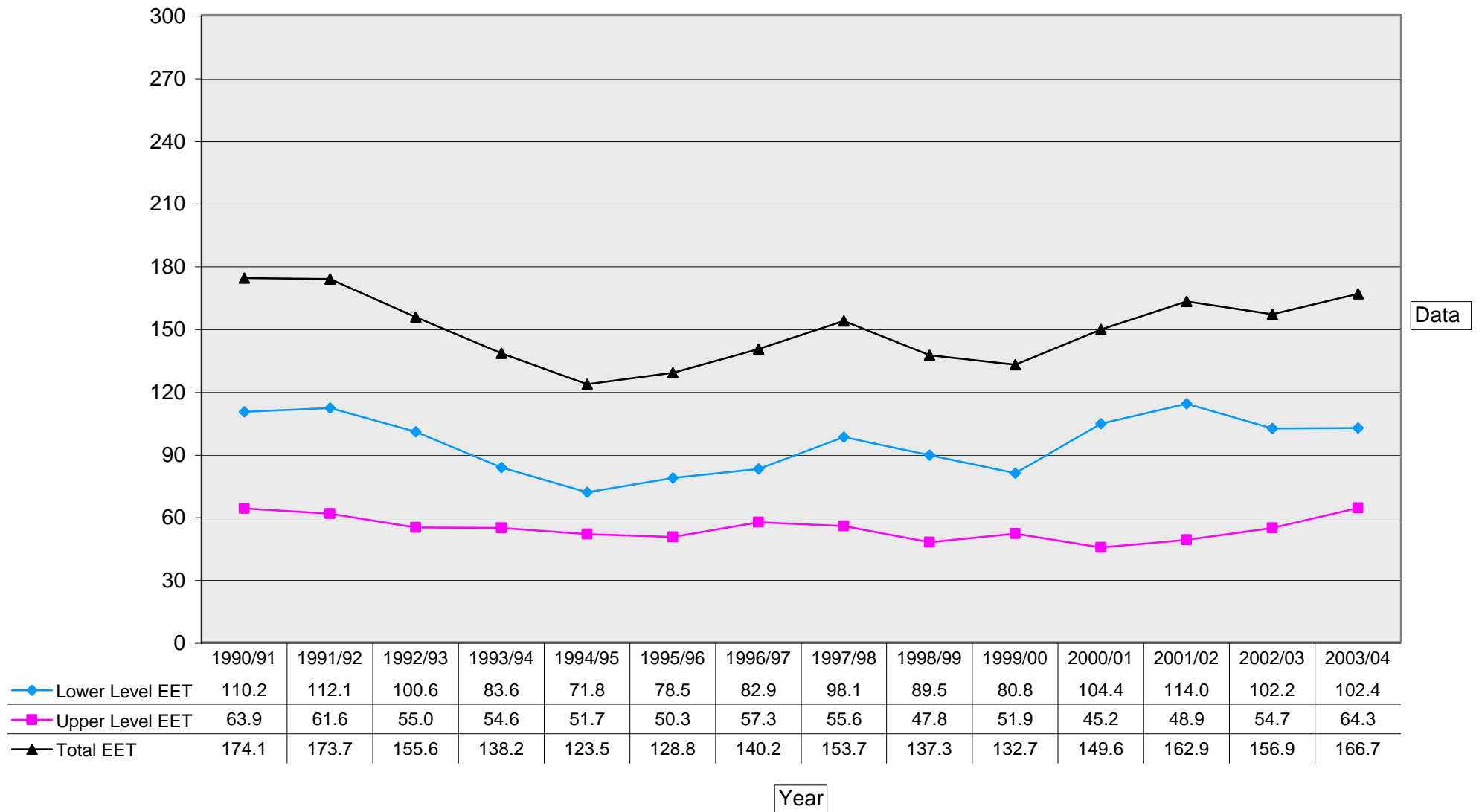
Source: ClassPops (ARAI Table 1)
University of Victoria

Institutional Planning & Analysis
March 4, 2004

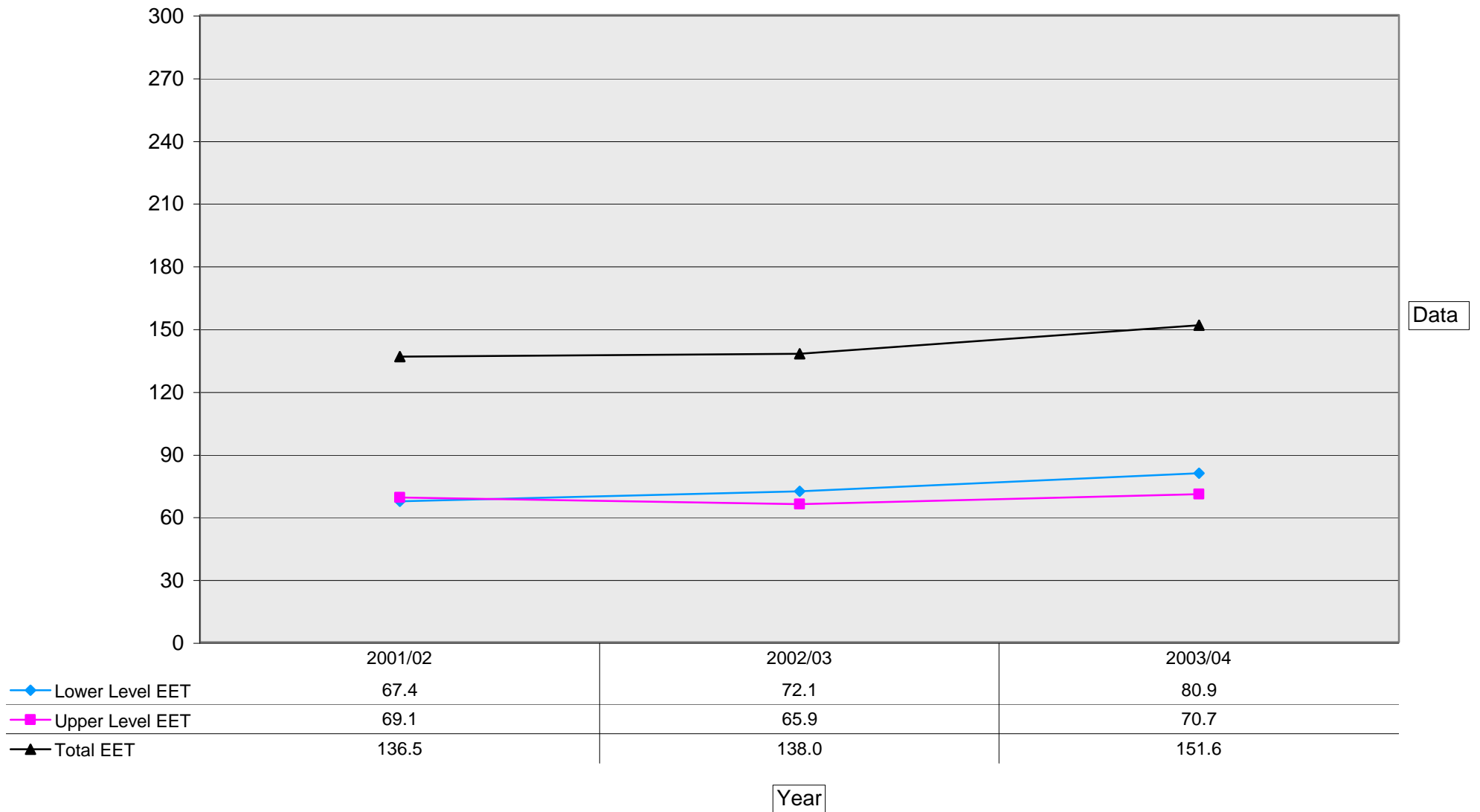
Annualized Equivalent Enrolments Taught (EET)



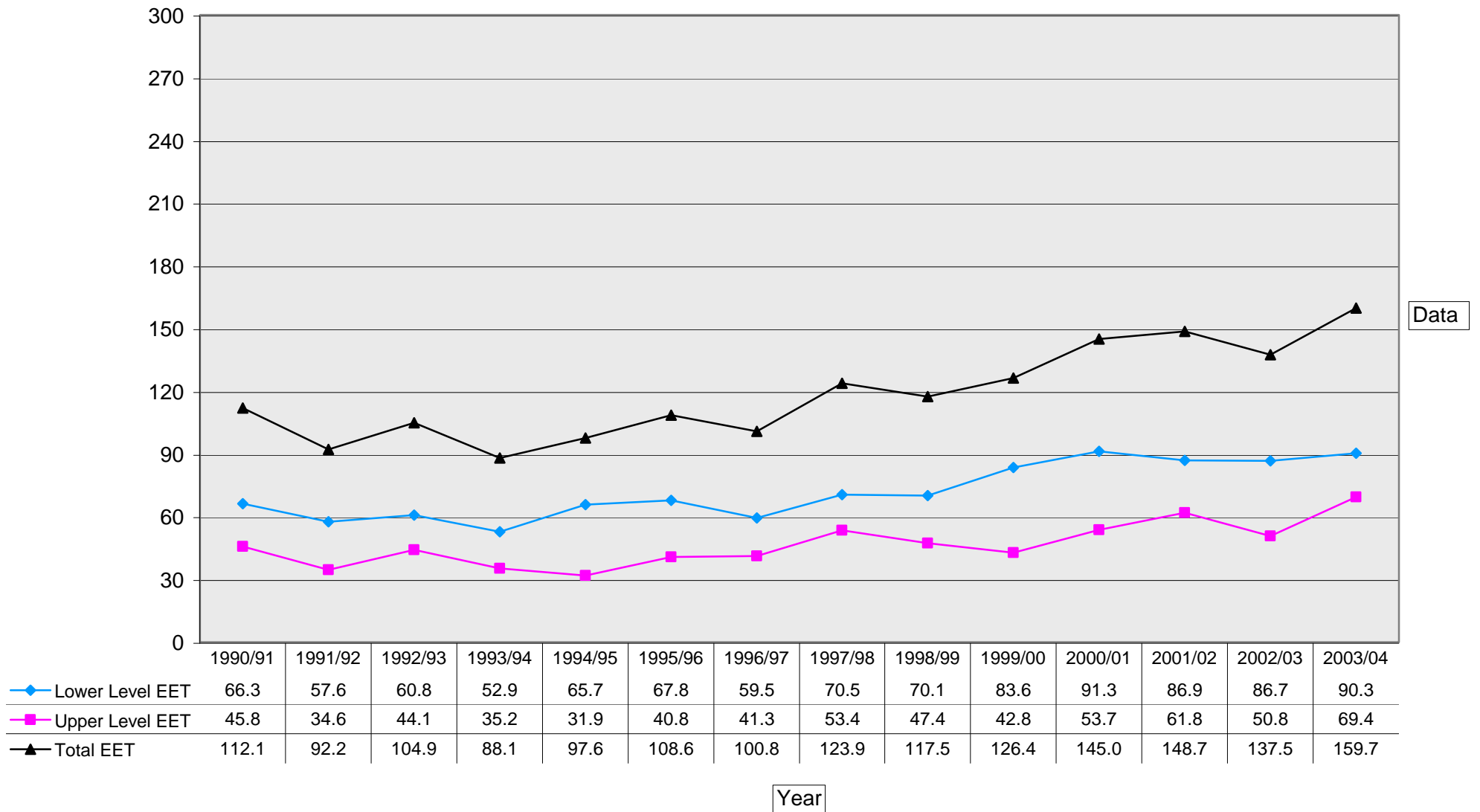
Annualized Equivalent Enrolments Taught (EET)



Annualized Equivalent Enrolments Taught (EET)



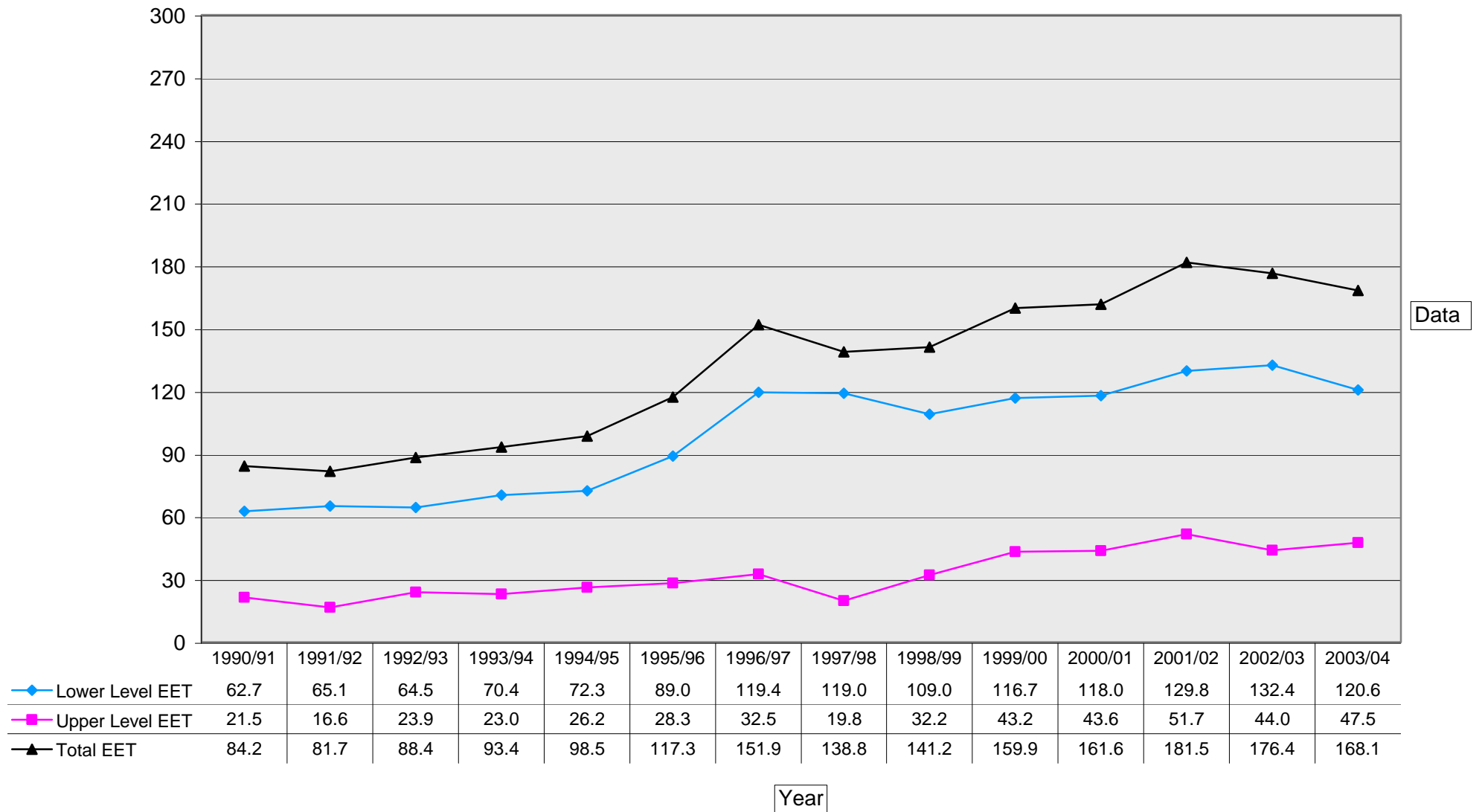
Annualized Equivalent Enrolments Taught (EET)



Source: ClassPops (ARAI - Table 1)
University of Victoria

Institutional Planning & Analysis
March 5, 2004

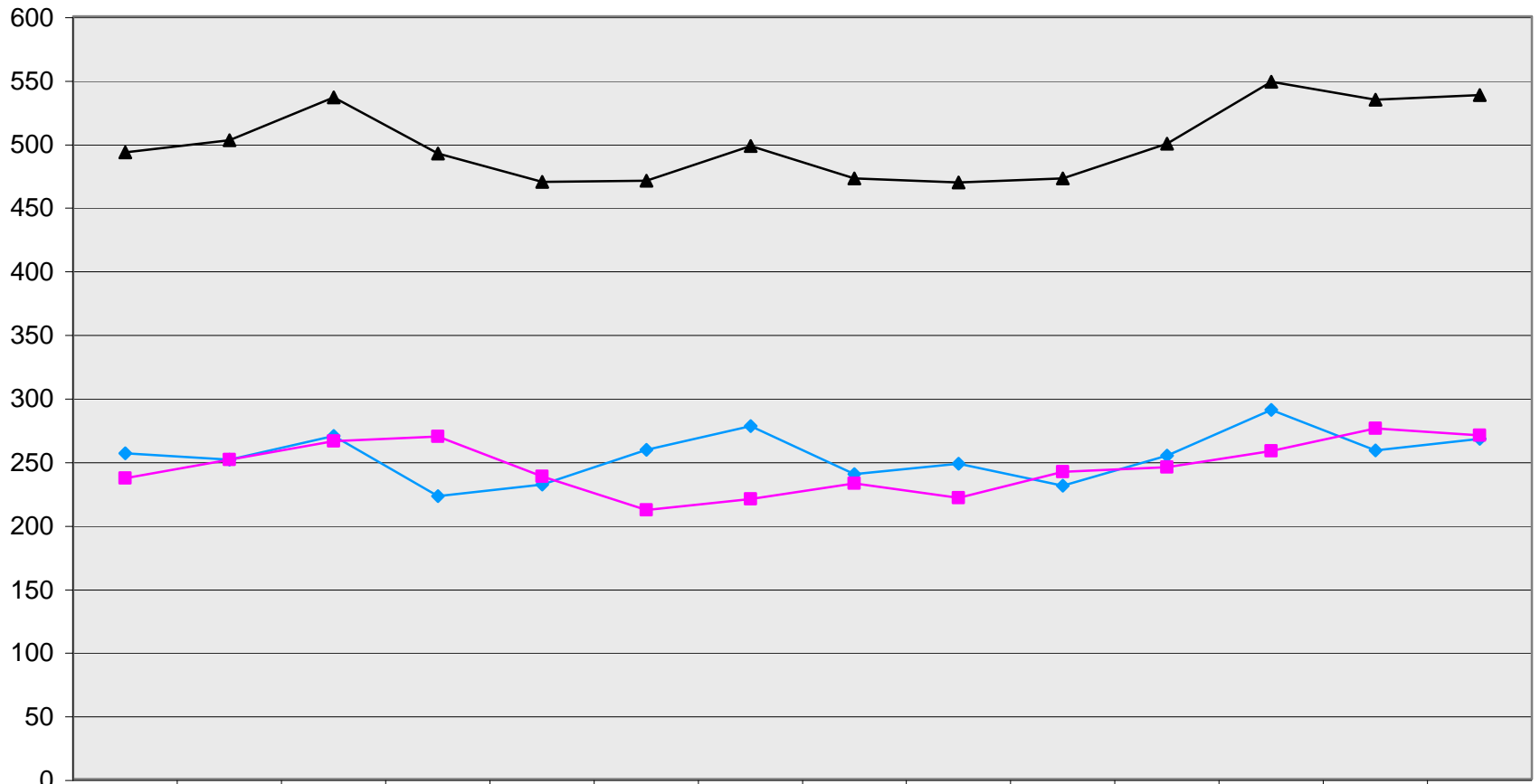
Annualized Equivalent Enrolments Taught (EET)



Source: ClassPops (ARAI - Table 1)
University of Victoria

Institutional Planning & Analysis
March 5, 2004

Annualized Equivalent Enrolments Taught (EET)

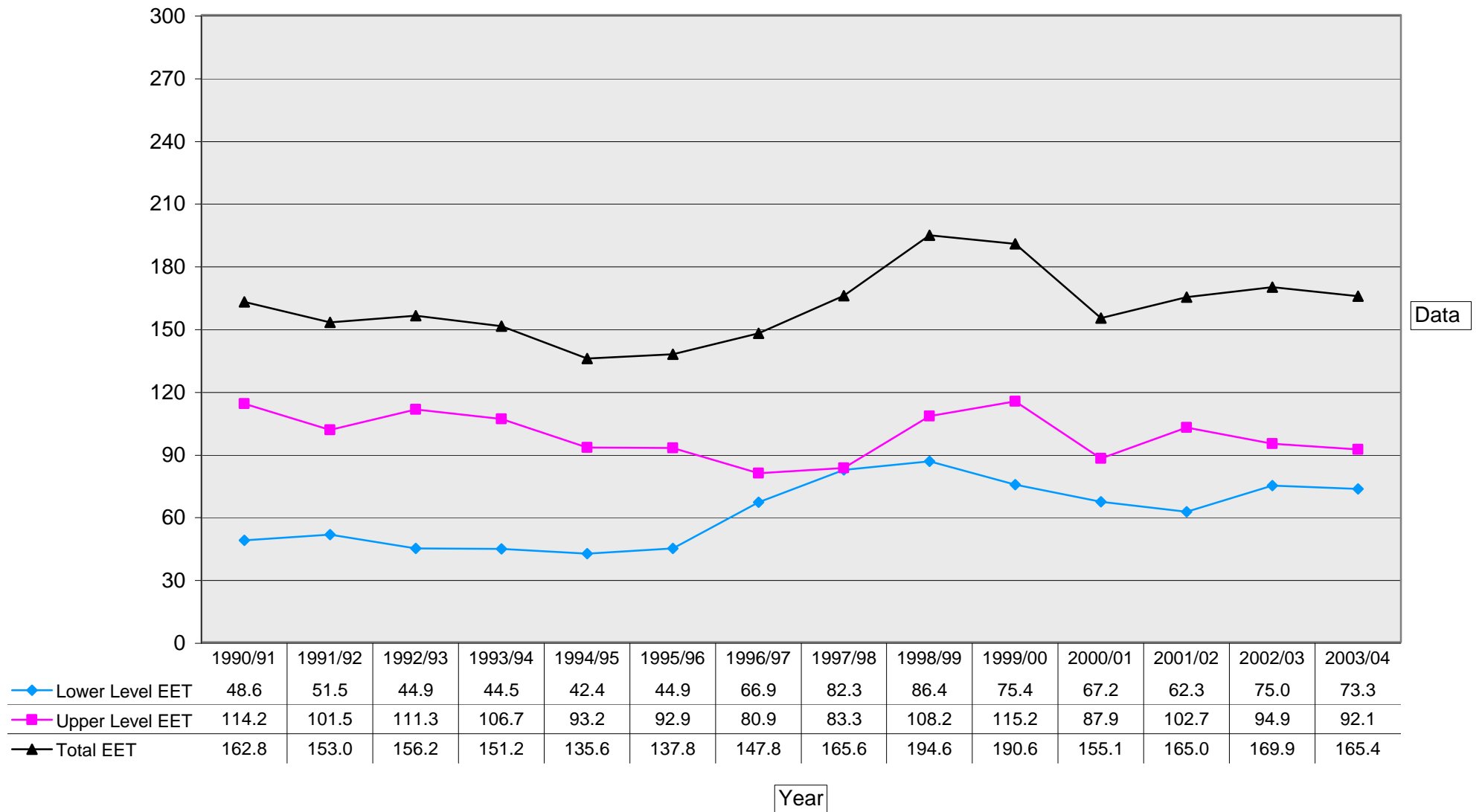


Data

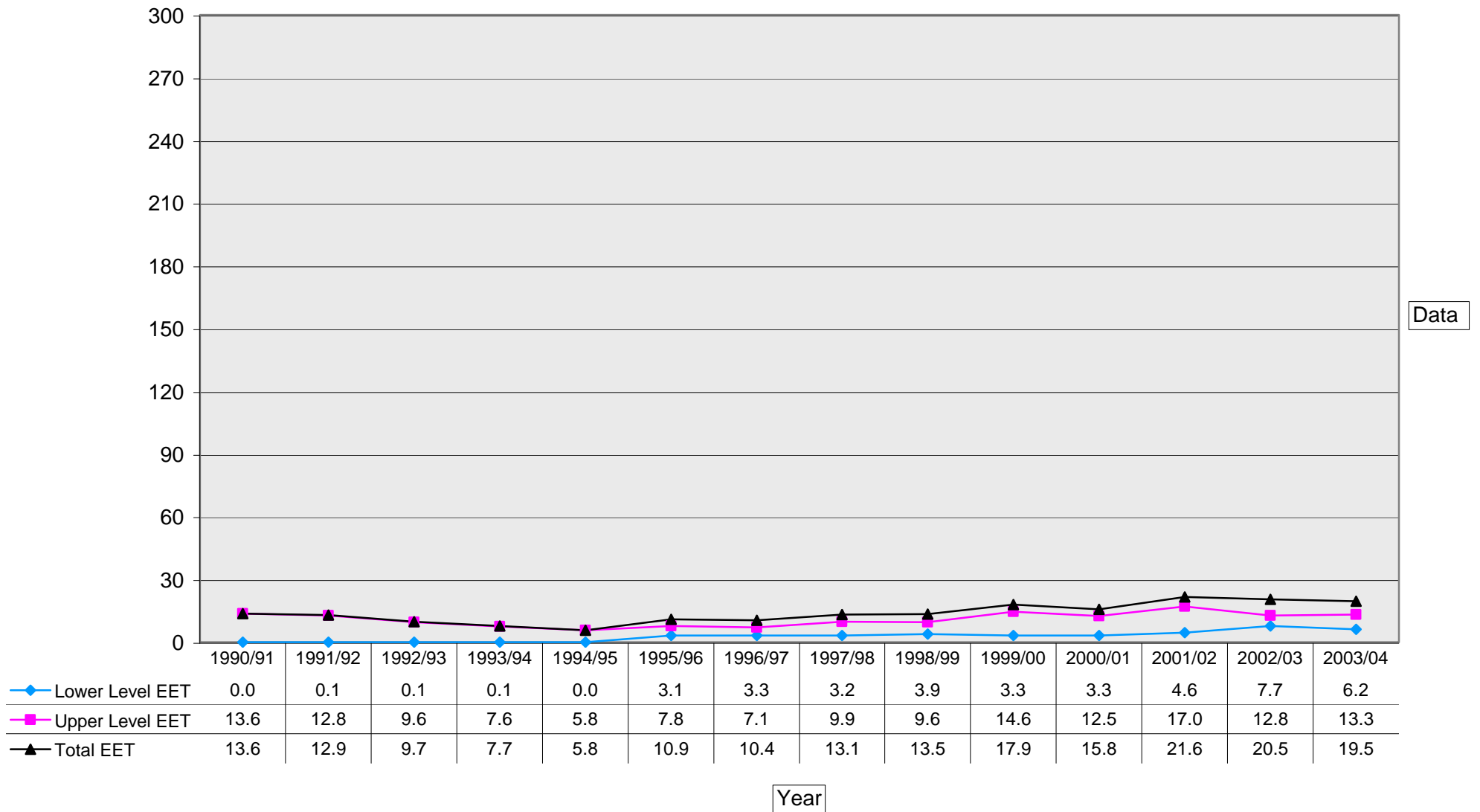
	1990/91	1991/92	1992/93	1993/94	1994/95	1995/96	1996/97	1997/98	1998/99	1999/00	2000/01	2001/02	2002/03	2003/04
◆ Lower Level EET	256.3	251.5	270.1	222.4	231.7	259.1	277.8	239.8	248.1	230.8	254.5	290.3	258.7	267.8
■ Upper Level EET	236.5	251.3	266.0	269.6	237.9	211.8	220.3	232.6	221.2	241.6	245.2	258.2	275.9	270.5
▲ Total EET	492.8	502.8	536.1	492.0	469.6	470.9	498.1	472.4	469.3	472.4	499.7	548.5	534.6	538.3

Year

Annualized Equivalent Enrolments Taught (EET)



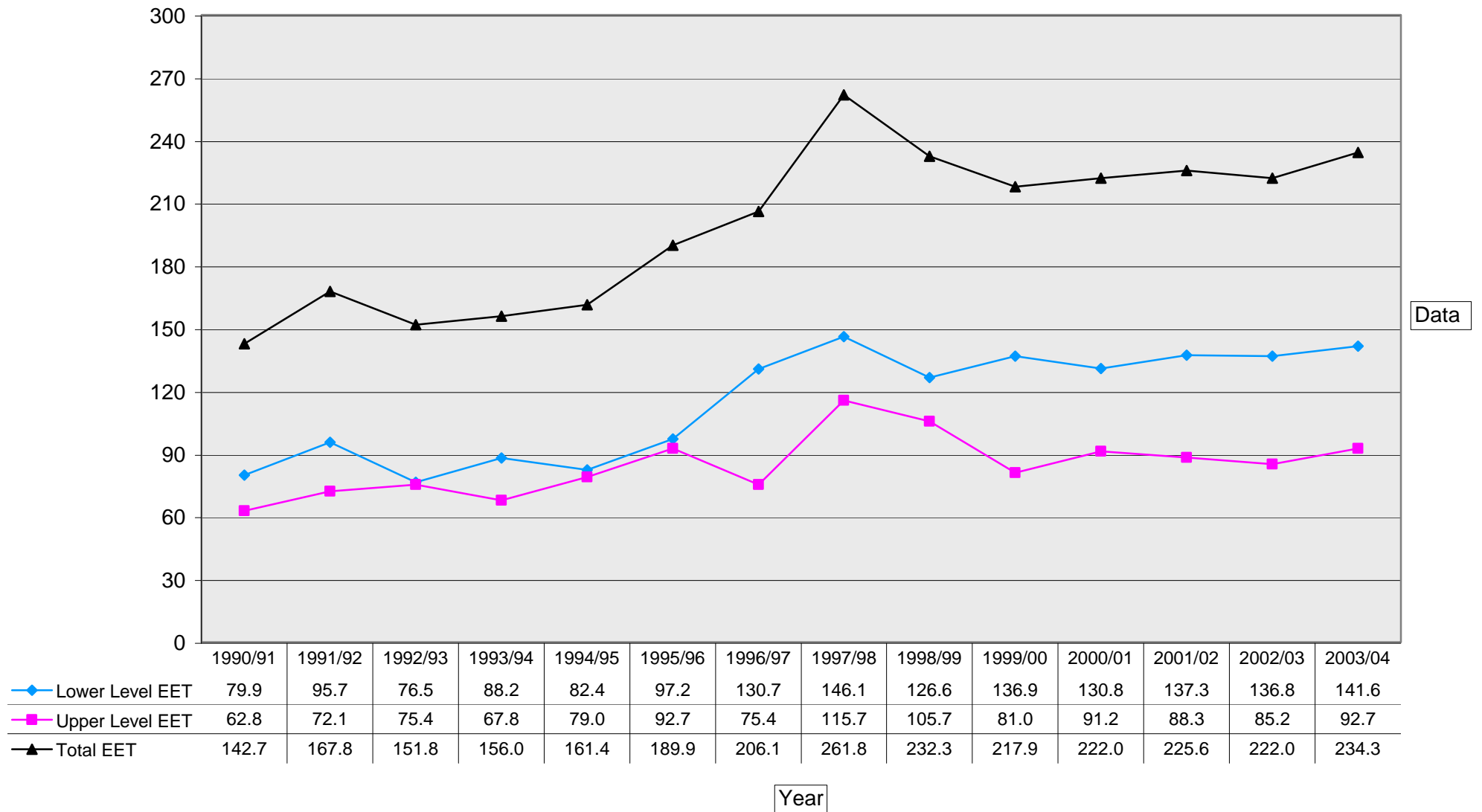
Annualized Equivalent Enrolments Taught (EET)



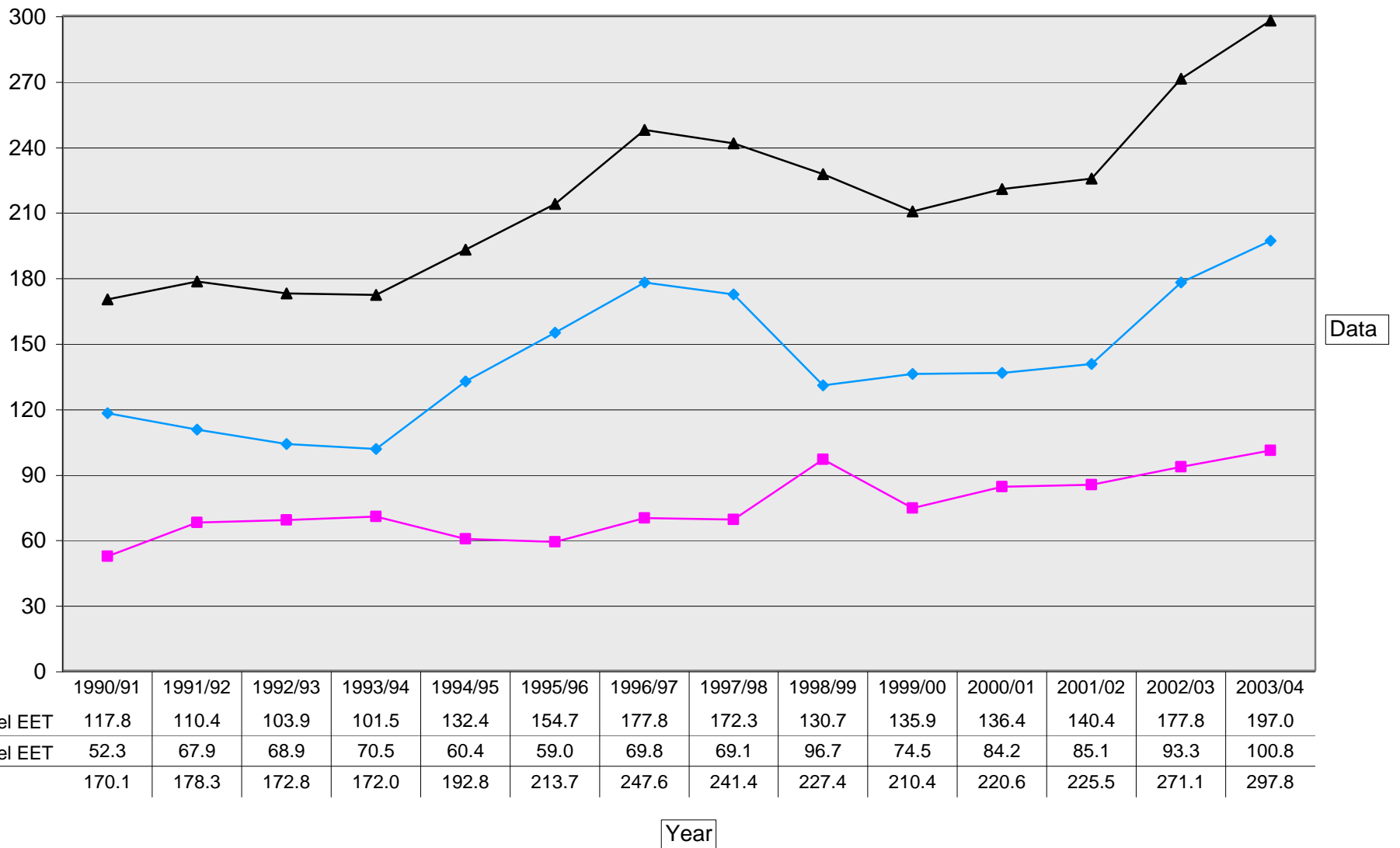
Source: ClassPops (ARAI - Table 1)
University of Victoria

Institutional Planning & Analysis
March 5, 2004

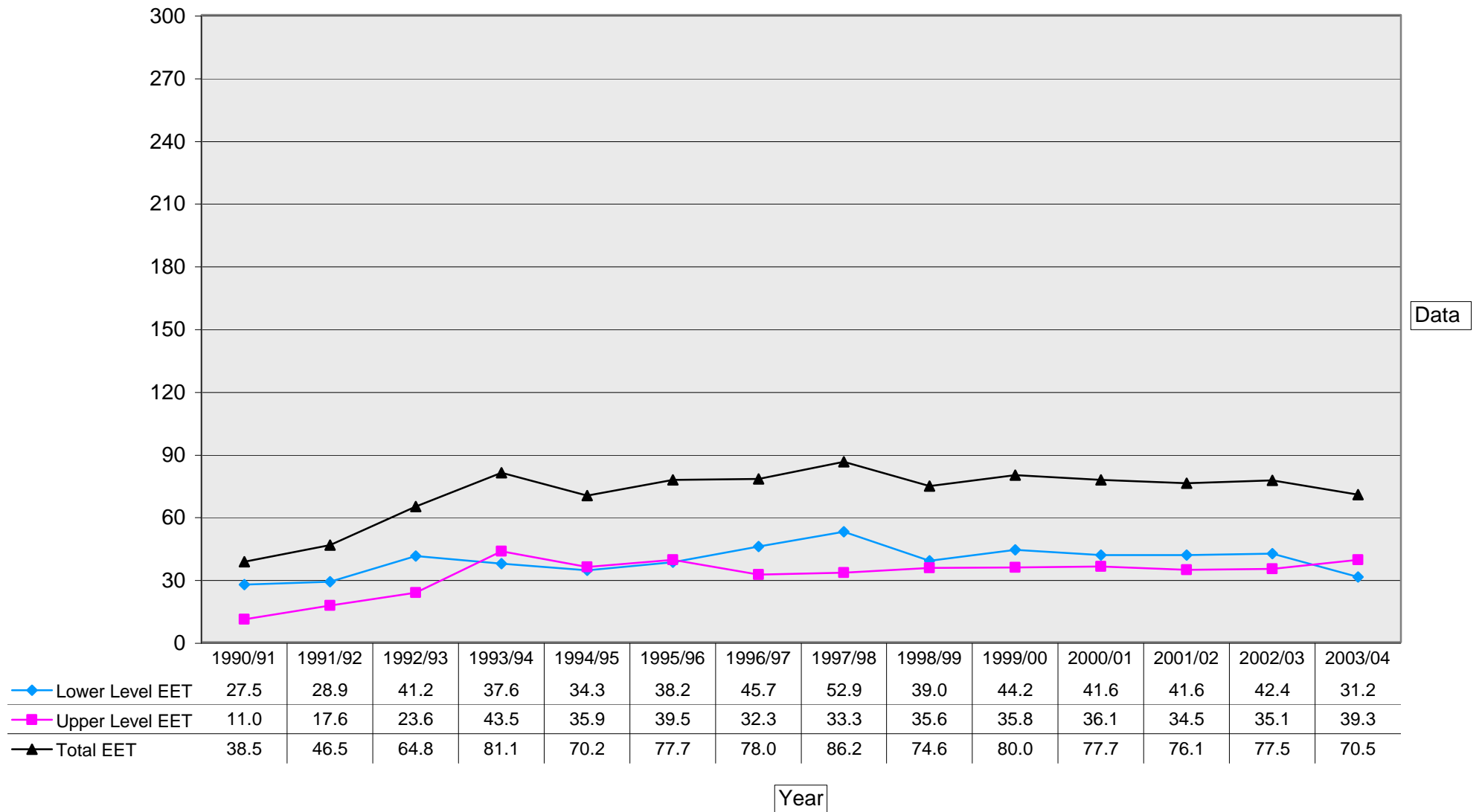
Annualized Equivalent Enrolments Taught (EET)



Annualized Equivalent Enrolments Taught (EET)



Annualized Equivalent Enrolments Taught (EET)



Source: ClassPops (ARAI - Table 1)
University of Victoria

Institutional Planning & Analysis
March 5, 2004